

Re-Imagining Possibilities





Re-Imagining Possibilities: A Transformative Year

2024 has been a pivotal year of change and growth for The Arc Prince George's County. We are proud to reflect on this year as we re-imagined what is possible for individuals with intellectual and developmental disabilities (IDD) and their families. We took bold strides to address longstanding challenges, foster inclusion, and create opportunities that empower everyone in our community to thrive.

Through this transformative work, we are addressing critical gaps in access, equity, and opportunity. We are investing in housing solutions, job training, and community-based services that provide the foundation for independence and inclusion. Together with our dedicated supporters, we are designing a blueprint for systemic change that will impact countless lives for generations to come.

This annual report is more than a snapshot of the past year; it's a story of resilience, collaboration, and possibility. It celebrates the collective power of our community—families, advocates, staff, volunteers, and donors—working together to ensure that no one falls through the cracks.

We remain steadfast in our belief that every individual has potential and deserves the chance to lead a fulfilling life. With your continued partnership, we will re-imagine what is possible and transform those possibilities into reality.



JIM CORNELSEN
The Arc Prince George's
County Board Chair



ROB MALONE
The Arc Prince George's County
President & Chief Executive Officer



BOARD OF DIRECTORS

OFFICERS

President

Jim Cornelsen
WesBanco

Vice President

Dan McKeon
Marriott Hotels and Resorts

Secretary

Viridiana Camacho
Chase Bank

Treasurer

Terrence Beverly
Eagle Bank

MEMBERS

Zulma Andrade
Self Advocate

Veronica Lee Ali
National Marine Sanctuary Foundation

Candice D. Austin
Verizon

Bill Breskin
Retired

Kimberley Brown
The Annie E. Casey Foundation

Shannan Herbert
Washington Area Community Investment Fund

Tonya Jackson
Transit Employees Health and Welfare

Rachel Jones
Employ Prince George's

Mia Jordan
Salesforce

Rik Khurana
CareFirst

Katie McEvoy
AT&T Services, Inc.

Donna Orange
Retired

Marchetta Powell
Comcast

Lisa Shames
Parent Advocate

Lisa Simmons
Maximus

Jada Thornton
M&T Bank

K. Alexander Wallace
Equifax, Inc.

Nnena Wilson
Self-Advocate

Our Leadership



STAFF LEADERSHIP

Rob Malone

President & Chief Executive Officer

Thalia Simpson-Clement
Chief Program Officer

Sheldon Kronzek
Chief Financial Officer

Lorraine C. Holmes Settles, CFRE, SFX
Chief Development Officer

A. Henley
Chief of Staff

Melonee Clark
*Division Director of Family,
Education & Community Engagement*

Mycie Lubin
Division Director of Community Living

Miyan Thomas
*Division Director of Day
and Employment*



Our **AMAZING** Impact: 2024



- **4,500: Total People Served!** This includes 3,500 children and youth across Prince George's County.
- **143: People Live in 43 Residences.** An average of three people live together, building life-long friendships and creating cohesive communities.
- **188: People Served by Meaningful Day Programs.** Individuals become as independent as possible through community inclusion and exciting experiences.
- **120: People Transported by Arc Vehicles.** The Arc Transportation Services averages over 870,000 miles in trips annually for the people we serve.
- **98: People Employed through 38 Company Partners.** We work with our partners to provide supported meaningful employment opportunities for people with IDD.



OUR VALUED COMPANY PARTNERS:



Amicable Living
BK Miller's Warehouse
Chick-fil-A-Laurel
Chimes - Andrews Air Force Base
Collington Retirement Community
CW Resources - Homeland Security
DDA - Laurel, MD
DDA - Southern Maryland Office
FBI - Melwood
FCC Administrative Service Center
FCC Media Division
Giant Food - Calverton, MD
Giant Food - Largo, MD
Greenbelt Nursery School
Home Depot - MLK
Homeland Security Service Source-
IRS Washington DC & MD
Integrated Medical Clinic
Landscaping-Bethesda, MD
Metro Laundry

MITRE
Montgomery County Federation
of Families for Children's Mental Health
NASA-Melwood
Pentagon - Washington, DC
Prince George's Police Department
Resource Connections PG County
RIRNMAC, Bethesda, Maryland
Ross Department Store
S Brand Ins. Washington DC
Sacred Hearts Home, Hyattsville, MD
Safeway - DC - SE & NW
Scott Cleaning Company Service Source
Service Source/Census Bureau Suitland, MD
Sibley Memorial Hospital, DC
St. Ann's Infant and Maternity Home
University of Maryland Dining Hall North
& South Campus
USUHS Bethesda, Maryland
Wegman's Grocery Store - Lanham



- **64: People Received Case-Management Services.** We help people with IDD and their families receive proper assessments, access resources, and navigate benefits eligibility.
- **86: People Received Information & Referral Services.** We assist people in navigating the often confusing array of programs and services to ensure they receive the support they need.
- **650: People Received Short Term Emergency Assistance.** The Arc offers additional support for urgent needs on a case by case basis.
- **939: People Attended 36 Informational Workshops & Seminars.** Adults with disabilities attend networking opportunities while parents and families learn more through workshops and trainings.



The Challenge: *Where the Gaps Lie*

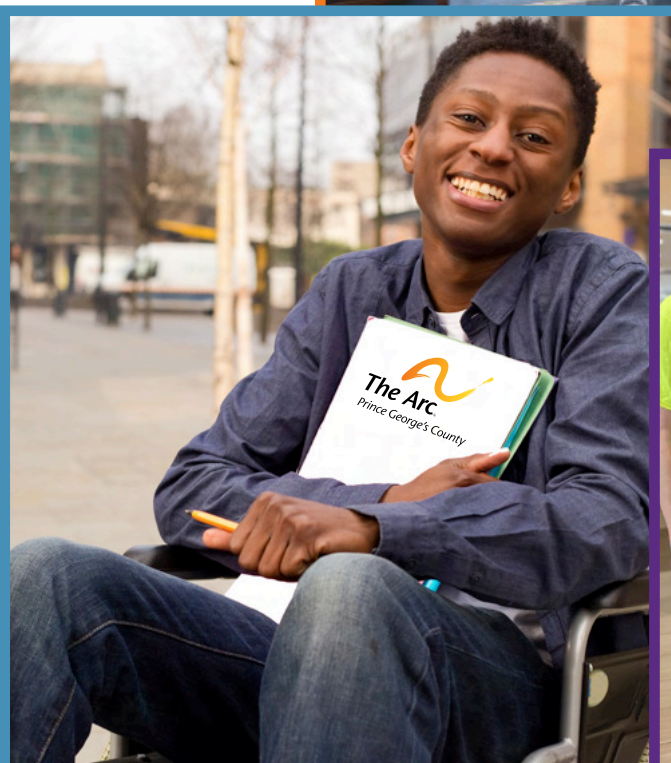
1. Falling Through the Cracks: Transitioning from High School

For many families, the transition from high school marks an alarming period of uncertainty. Critical support services, worth over \$25,000 annually, are often missed due to a lack of resources, guidance, or advocacy.



2. Program Expansions and New Support Needs

- **Benefit Enrollment Center (BEC):** Prince George's County's only BEC, offering free comprehensive benefits analyses to connect residents with vital federal and state resources.
- **Project LIVE:** Providing mental health and behavioral support for youth and young adults with IDD, addressing an unmet need for tailored mental health services.
- **Hispanic Outreach:** Our Spanish-language case management, education, and referral services ensure inclusivity and access.
- **Youth Transition Readiness:** Workshops, internships, and training programs designed to help young adults build the skills needed for independent living.
- **STAR (Support Through Advocacy and Resources):** Offering emergency and short-term support for families in crisis.



The Vision: *Re-Imagining Possibilities*



A BOLD PLAN

Our commitment to re-imagine what is possible for the IDD community includes:

- **\$7 Million for New Center & Upgrading Residential Care Facilities:** Creating modern facilities that foster inclusivity and innovation, including spaces for youth training, workshops, and behavioral health programs.
- **\$3.5 Million for Program Expansion & New Services:** Scaling initiatives like BEC, Project LIVE, and Hispanic Outreach to serve more families with enhanced quality.
- **\$1.5 Million for an Endowment:** Strengthening our ability to guide families during critical transitions, ensuring that no one misses out on life-changing resources.



Our Plan: *Bridging the Gap*

1. Empower Families During Transitions

By hiring transition specialists and offering personalized guidance, we aim to ensure that families are equipped to access all available services, preventing costly gaps in education and care.

2. Expand Our Reach and Inclusivity

Through innovative programs like H.O.P.E. (Hispanic Outreach Through Positive Engagement), we will meet the needs of diverse communities, breaking down barriers to access.



3. Invest in the Future of Our Youth

Programs like Youth Transition Readiness will give young adults the tools to thrive—preparing them for employment, independent living, and meaningful community involvement.

4. Respond to Urgent Needs

Services like STAR ensure that families in crisis don't face challenges alone, providing immediate, short-term support when it matters most.



Cultural Brokers: *Building Bridges*



These brokers served as **trusted community liaisons**, helping bridge cultural and linguistic barriers that often impede access to services in Spanish-speaking communities.

Their jobs were made possible by a grant from the Maryland Developmental Disabilities Council.

We were empowered to change **150 lives!**





- **Project LIVE (Living with Intention, Vision & Empowerment)** served **482 families** in 2024. This new behavioral health program supports youth ages 16–25 who are Prince George’s County residents. This vital initiative offers free mental health screenings, free resources and referrals, as well as free comprehensive treatment via in–person and virtual therapy, training and peer support groups.
- **The Benefits Enrollment Center (BEC)** has uncovered **25 million dollars** in benefits since it started in 2017 for the families we support.
- **Over 2,300 Hispanic families** connected with resources via our outreach initiatives.
- **137 people** were assisted with **state and federal benefits applications** this year.
- **117 young adults** trained for independent living through Youth Transition Readiness programs: **Ready@21, Ready2BSocial, Ready2Travel.**
- **75 urgent family needs** were met through **STAR.**

A Caregiver Speaks Out:

Tjameika



Tjameika's journey with The Arc Prince George's County began in 2005 when she sought support for her daughter, Kennedy, who has a rare form of autism.

In 2024, Tjameika reached a turning point. She decided it was time to give back in a bigger way. Inspired by her own experiences and the growth she's witnessed in her daughter, Tjameika stepped forward as a vocal advocate, not only for Kennedy but for The Arc and other families navigating similar journeys.

"I've seen firsthand how The Arc transforms lives," Tjameika shares. "For 19 years, they've been my partner, my guide, and my community. Now, it's my turn to help others see what's possible when you have the right support."

For Tjameika and Kennedy, the journey is far from over—but now, they're leading the way and helping others re-imagine possibilities for their loved ones.



THE FINANCIALS

FY2024

Audited Financials

The Arc Prince George's County had a successful financial year in FY 2024. We were able to not only strengthen our ongoing services to the community but in many cases expand and add new services to the people we serve. We were also able to reduce our staffing vacancies to less than 60.

REVENUE: \$56,265,166 TOTAL

Residential Services	\$32,125,804
Meaningful Day Services	\$10,256,916
Family & Community Supports	\$5,826,310
Grants & Fundraising	\$4,741,303
Administrative Services	\$1,960,903
Transportation Services	\$1,353,930

EXPENSES: \$51,092,821 TOTAL



Residential
Services

\$30,342,625



Meaningful
Day Services

\$8,855,128



Administrative
Services

\$5,046,636



Family &
Community
Supports

\$5,011,054



Grants &
Fundraising

\$1,003,358



Transportation
Services

\$834,020

Our Valued Donors: *We Couldn't Do*

2024 Donors @\$500+

Anonymous
Vykontam Adepu
Alco Pharmacy
AT&T
Jerald and Shari Baker
James R. and Linda Beers
Cindy Benedetti
Berenbaum Family Foundation
Blue Cross Blue Shield Association
Bob Grill General Contractor, Inc.
Patricia Bowden
William A. Breskin
Kimberley Brown
Brown and Brown
Donna Bryant
Viridiana Camacho
CareFirst
The Annie E. Casey Foundation
Chase Bank
The Columbus Foundation
Comcast
James and Connie Cornelsen
Cathy Coughlin
The Crescent Cities Charities
Elizabeth Danahy
Eagle Bank
Sarah Earwicker
Enterprise Community Partners
Enterprise Foundation
William Fern
Veronica D. Fern
Merinda Garland
Christopher and Ellen Gede
Clifford George
Phillip Graham Foundation
Guiding Exceptional Parents



it Without You!



Geraldine Hall
Shannan Herbert
Nick and Irene Hluchyj
Lorraine Holmes-Settles
Tonya Jackson
Evelyn King
Labcorp Charitable Foundation
Barbara Lampe
Julia Marie and John Laulis
Life Bridge Community Church
Rob and Jualecia Malone
Maryland Department of Health
Maryland Developmental
Disabilities Council
Maryland State Council Knights
of Columbus
Maryland State Department
of Education
Maryland Print & Design
Maximus Foundation
Trevor McKie

MGM Resorts International
Lynne E. Monastero
Mullen, Sondberg, Wimbish, & Stone
National Council on Aging
Northrop Grumman
Donna Orange
Shirley Patterson
Wesley and Connie Paulson
Betsey and Pat Petit
Joseph Polanin
George Preston Marshall Foundation
Prince George's Community Partnership
Prince George's County
Prince George's County Council
Prince George's County Executive Office
Prince George's County Provider's Council
The Pull-Up Fund
Jack "Mac" and Debra Ramsey
Charlean Rice
Substance Abuse and Mental Health
Services Administration (SAMSHA)
Lisa Shames
Kia Silver-Hodge
Steven Slojkowski
Patricia Smith
State Farm
James and Denise Stockton
William and Patricia Stokes
Kim Tart
Kenneth and Lucille Taylor
TD Charitable Foundation
Tegna Foundation
Truist Bank
United Healthcare Foundation
Verizon
Helen Wardman Naselli Trust
WesBanco
Milicent Wewerka



Looking Ahead: *Investing in the Future* ✨




The Arc
Prince George's County
A Caring Community



Equipped: *Continuing our Mission* ✨

The Arc Prince George's County reaffirmed its unwavering commitment to excellence by achieving the Maryland Nonprofits Standards for Excellence® Recertification.

This prestigious designation underscores our dedication to strong governance, financial accountability, and ethical nonprofit management—ensuring that every dollar entrusted to us is maximized for impact.

Earning the Standards for Excellence® designation reinforces our promise to our donors, funders, and community partners: your support is managed with integrity and purpose.



✨ ✨ ✨ ✨ ✨ ✨ ✨



The Arc®
Prince George's County
A Caring Community

