



TAKE CONTROL Summit

Helping Caregivers Navigate through Future and Financial Planning

RESOURCE GUIDE

AUGUST 2019-AUGUST 2020





LET US HELP YOU!



Benefits Enrollment Center for People with Disabilities

PRINCE GEORGE'S COUNTY RESIDENTS AGES 18 YEARS OLD AND UP



What Does the Center Do:

- * Educate Community Stakeholders, Families and Persons with Disabilities about available benefits.
- * Screens to determine eligibility for multiple federal, state and private benefits.
- * Assists with completing and submitting applications.

Types of *FREE* Benefits you may enroll in:

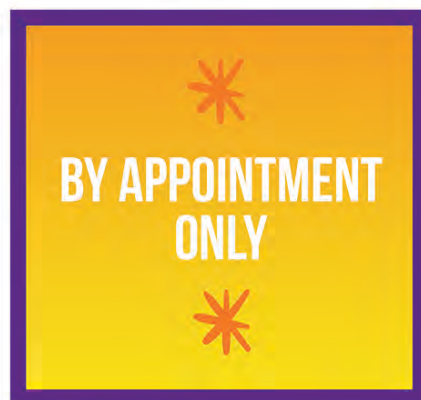
- * **Supplemental Nutrition Assistance Program (SNAP):** provides credits on electronic cards enabling recipients to buy nutritious food at participating stores.
- * **Low Income Home Energy Assistance Program (LIHEAP):** assists qualified individuals with their home heating and cooling costs.
- * **Life Line Program:** Federal Program provides a monthly benefit on home or wireless phone.
- * **Supplemental Security Income (SSI):** provides cash to meet basic needs for food clothing, and shelter.
- * **Metro Access:** Reduced fare program for public transportation.

**Call Today to Schedule an Enrollment
Application Appointment and Leave
with your *FREE* Screening Guide!**

* ASK FOR BENEFITS *

301-925-7050 ext. 267

or email membership@thearcofpgc.org





TAKE CONTROL Summit

Dear Arc of PGC Members, Supporters and Friends:

Access to the right information is the key to planning a successful future!

That's why we are excited to introduce the Take Control Summit and Resource Guide, a program and directory created to help caregivers navigate through future and financial planning.

We understand the importance of future planning, especially for families with members who have special needs. It is our hope that the Summit and Resource Guide will help you:

- Take Control by identifying your Future Planning Team
- Take Control by preparing for every stage of your and your love-ones life
- Take Control by addressing all the unique and complex planning considerations
- Take Control by maximizing both public and personal resources

Family and Friends, please know that we will continue to be a resource and advocate, providing guidance and leadership in your journey to plan for your love-one's future.

Sincerely,

Rob Malone
Executive Director

RESOURCE GUIDE CONTENTS

Family Support.....	5	Citizenship & Advocacy.....	14
Transportation.....	6	Healthy Living	15
Autism	8	Employment.....	18
Respite	11	Assistance.....	18
Future Planning	13	Useful Resources.....	21

*Creating Community
For All*



PGCR
Prince George's
Community Resources

We do this through our....

- *Therapeutic, educational and recreational programs that include: Adaptive Art, Adaptive Martial Arts, Adult Literacy & Reading, Cardio Kickboxing Fitness, Computer Skills, Creative Movements/Dancing, Daily Living Skills, Health and Wellness, Life Skill Training , Music Enrichment and ZamDance.*
- *Workshops that aid and support our members including: Brunch Bunch, Self Direction Connection and Annual Wellness Expo.*
- *Social Events to promote full inclusion especially with our FREE Bingo and Movie Nights.*
- *Community Engagement activities as we host and offer meeting venues for our community partners with Art Shows, IEP clinics, fitness, advocacy and more.*

Established in 2015, PGCR strives to support its members, looking for inclusive ways to engage them in community life. We are always seeking new partnerships, instructors and spaces to create programs, that address the needs of our members created by gaps in other services.

We are not financially subsidized so we rely on donations and fund raising to meet our needs . All donations are tax deductible and help us to provide scholarships for our program participants.

For more information please call us or visit, website or send us an email

301-442-3708

www.PGCR.org or PRozanski@PGCR.org



FAMILY SUPPORT

Parents of Children with Down Syndrome

WEBSITE	TELEPHONE	EMAIL
podsofpgc.org		podsofpgc@gmail.com

Special Education Citizen Advisory Committee (SECAC)

WEBSITE	TELEPHONE	EMAIL
secacpg.org	301-431-5675	

Adults Developmental Disabilities Advisory Committee (ADDAC)

WEBSITE	TELEPHONE	EMAIL
		ADDACAP@aol.com

One World Center for Autism

WEBSITE	TELEPHONE	EMAIL
worldforautism.org	301-618-8395	info@worldforautism.org

Roberta's House Family Grief Support Center

WEBSITE	TELEPHONE	EMAIL
robertashouse.org	301-880-5100	info@robertashouse.org

Maryland Sibling Network

WEBSITE	TELEPHONE	EMAIL
mdsibs.com		

MD Coalition of Families

WEBSITE	TELEPHONE	EMAIL
mdcoalition.org	410-730-8267	

NAMI

WEBSITE	TELEPHONE	EMAIL
namipgc.org	301-429-0970	nami.pgmd1@gmail.com

Archdiocese of Washington

WEBSITE	TELEPHONE	EMAIL
adw.org	301-853-4500	specialneedsministry@adw.org

First Baptist Church of Glenarden

WEBSITE	TELEPHONE	EMAIL
fbcglenarden.org	301-773-3600	praisefbcglenarden@gmail.com

The Gathering Place

WEBSITE	TELEPHONE	EMAIL
thegatheringplacemd.org	301-262-4141	TGPweb24@gmail.com

MD Family Network

WEBSITE	TELEPHONE	EMAIL
marylandfamilynetwork.org	410-659-7701	

TRANSPORTATION

Metro Access Paratransit

WEBSITE	TELEPHONE	EMAIL
wmata.com	202-962-2686	

Abilities Ride

WEBSITE	TELEPHONE	EMAIL
Armonusa.com coachtransportation.com	301-431-5675	

The Bus

WEBSITE	TELEPHONE	EMAIL
princegeorgescountymd.org		

Call-A-Bus

WEBSITE	TELEPHONE	EMAIL
princegeorgescountymd.gov	301-883-5656	



A New Church That is Intentionally Inclusive to Individuals and Families with Special Needs or are Differently Abled.

Meets every Sunday afternoon from 1:30 PM to 3:00 PM

6510 Laurel Bowie Rd

Includes:

- Weekly ministry for Children, Transitional Adults and Adults (The Zone and The Children's Zone)
- Quarterly Fellowships (1st Sunday for adults who need no support person)
- Monthly Family Worship (3rd Sunday)
- Monthly Parent Bible Study Support Groups
- Regular Community Outreach Events

Website: thegatheringplacemd.org

For more information email Pastor Tommy Rowe
thegatheringplacemd@gmail.com

AUTISM

One World Center for Autism

WEBSITE	TELEPHONE	EMAIL
worldforautism.org	301-618-8395	info@worldforautism.org

Autism Waiver

WEBSITE	TELEPHONE	EMAIL
thearcofpgc.org/our-programs/children-and-youth/autism-waiver/	301-925-7050	

Pathfinder for Autism

WEBSITE	TELEPHONE	EMAIL
pathfindersforautism.org	443-330-5341	

Adults Developmental Disabilities Advisory Committee (ADDAC)

WEBSITE	TELEPHONE	EMAIL
		ADDACAP@aol.com

Camp Blue Summer Camp Scholarship

WEBSITE	TELEPHONE	EMAIL
pgparks.com/684/Camp-Bling-for-Blue-Scholarship	301-699-2255	customerservice@pgparks.com

Autism Speaks 100 Day

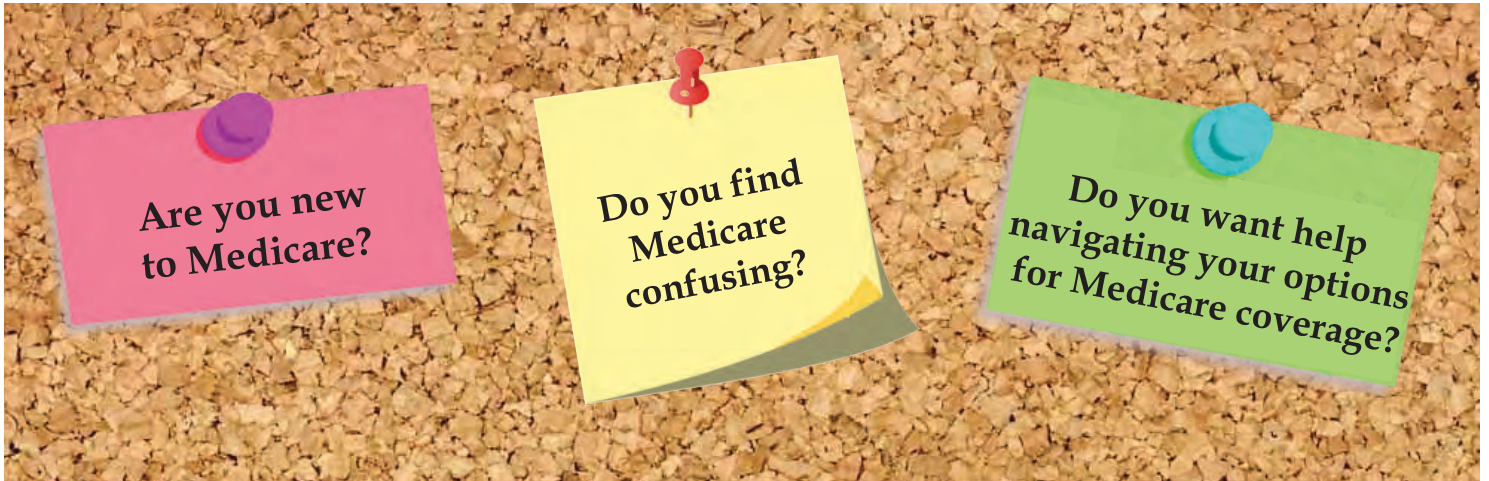
WEBSITE	TELEPHONE	EMAIL
autismspeaks.org/		familyservices@autismspeaks.org

Parents Helping Parents Together

WEBSITE	TELEPHONE	EMAIL
Parentshelpingparents.org	301-531-5153	Parentshelpngparents4miller@gmail.com

Kennedy Krieger Center for Autism and Related Disorders

WEBSITE	TELEPHONE	EMAIL
kennedykrieger.org/patient-care/centers-and-programs/center-for-autism-and-related-disorders	443-923-7630	



Department of Family Services
State Health Insurance Assistance Program
presents
"Introduction to Medicare"

Tuesday, July 2, 2019

Tuesday, August 6, 2019

Tuesday, September 3, 2019

Tuesday, October 1, 2019

Tuesday, November 5, 2019

Tuesday, December 3, 2019

The Department of Family Services
hosts free Medicare seminars!

WHEN: The First Tuesday of each month
10:00 am to 12:00 pm

WHERE: 6420 Allentown Road
Camp Springs, MD 20748
(Conference Room West)

RSVP:

Desirée Williams 301-265-8450
dmwilliams@co.pg.md.us



Angela D. Alsobrooks
County Executive



LOCAL HELP FOR PEOPLE WITH MEDICARE



Family. Friends. Community.

Kirk Lynn CLU LTCP LUTCF, Agent
2431 Crofton Lane Ste 13
Crofton, MD 21114
Bus: 410-721-1800
www.kirklynnagency.com

We're all in this together.

State Farm® has a long tradition of being there. That's one reason why I'm proud to support The ARC of Prince George's County.

Here to help life go right.®



1801073

State Farm, Bloomington, IL



THE LAW OFFICE OF
CHERYL CHAPMAN HENDERSON, LLC

A Law4God® Firm

The Estate Planning and Elder Law Firm

OFFICE

**4920 Niagara Road, Ste. 200
College Park, MD**

HOURS OF OPERATION

M-F, 9am to 5:50pm

PHONE

301-220-4463

www.HendersonLaw4God.com

"Buddy Break is a special gift for parents of children who are able to participate! The kids find a place where they fit right in, are cared for, and loved in ways that sometimes parents are not able to provide because they are exhausted. The VIP gets to play with their Buddy and their siblings gets to talk to other children, who like them live with a sibling that requires special attention. Parents have "me" time to do whatever comes natural and necessary at the time.

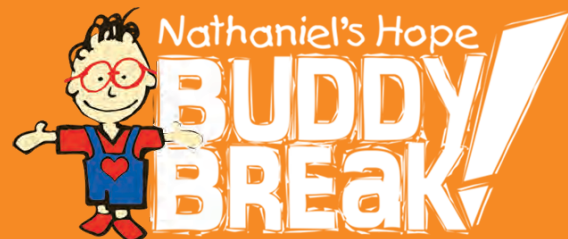
RESPIRE CARE

First Baptist Church of Glenarden
600 Watkins Park Drive
Upper Marlboro, MD 20774
301-773-3600
specialneeds@fbcglenarden.org

Buddy Break Schedule
Every 4th Saturday
10 a.m.-1 p.m.

Note the schedule is subject to change.
Please contact ministry for more details.

We invite you to visit Buddy Break.
To register go to www.nathanielshope.org and complete the online VIP Family info form.
FBCG is the host site.
To reserve space at FBCG email us at specialneeds@fbcglenarden.org for details.



SPECIAL NEEDS MINISTRY RESPIRE SUPPORT FOR CAREGIVERS



Autism Society

WEBSITE	TELEPHONE	EMAIL
autism-society.org/	1-800-328-8476	

Children's National Health System Center for Autism Spectrum Disorder

WEBSITE	TELEPHONE	EMAIL
childrensnational.org	301-765-5430	

Autism FYI

WEBSITE	TELEPHONE	EMAIL
autismfyi.org	301-367-1042	admin@autismfyi.org

RESPIRE**PG County Respite**

WEBSITE	TELEPHONE	EMAIL
princegeorgescountymd.gov	301-909-2091	

Buddy Break Nathaniel's Hope

WEBSITE	TELEPHONE	EMAIL
nathanielshope.org	301-773-3600	specialneeds@fbcglenarden.org

One World Center for Autism

WEBSITE	TELEPHONE	EMAIL
worldforautism.org	301-618-8395	info@worldforautism.org

Emergency Respite Services

WEBSITE	TELEPHONE	EMAIL
maryland respitecoalition.org	410-323-1700	



**Maryland Developmental
Disabilities Council**

EMPOWERMENT • OPPORTUNITY • INCLUSION

Planning Now: A Futures and Estate Planning Guide for Families of Children and Adults with Developmental Disabilities

Future and estates planning includes envisioning a desired future for your child. *Planning Now* discusses the importance of planning and provides essential information, suggestions, and a framework for planning.

It is very important to plan regardless of the type and severity of your child's disability, the makeup of your family, or the amount of money you have.

Planning Now considers some basic questions, including:

- ◆ How can families assist their adult children now, or their minor children in the future when they enter adulthood, to live where and with whom they want with the support they need?
- ◆ How can parents or other relatives, during their lifetimes or upon their death, help their loved one with a disability?
- ◆ How can they avoid jeopardizing essential public medical and financial benefits (like Supplemental Security Income and Medicaid)?



Planning Now explains important issues and ideas to consider; provides a basic understanding of financial, legal, and planning tools to help organize and develop a plan; and explains how to select and work effectively with professionals.

Electronic and print versions are available for free.

www.md-council.org | info@md-council.org | Phone: 410.767.3670

Spanish version available.

Publication is available in alternative formats upon request.

217 E. Redwood St., Suite 1300 • Baltimore, MD 21202 • 410.767.3670 • 800.305.6441 • md-council.org

Kalani Brown, Chairperson • Brian Cox, Executive Director

FUTURE PLANNING

MD Planning Now Guide

WEBSITE	TELEPHONE	EMAIL
md-council.org	410-767-3670	info@md-council.org

PGC Register of Wills

WEBSITE	TELEPHONE	EMAIL
registers.maryland.gov	301-952-3250	

The Arc US Center for Future Planning

WEBSITE	TELEPHONE	EMAIL
futureplanningthearc.org	202-617-3268	

DC Quality Trust

WEBSITE	TELEPHONE	EMAIL
dcqualitytrust.org	202-448-1450	info@dcqualitytrust.org

Special Needs Alliance

WEBSITE	TELEPHONE	EMAIL
specialneedsalliance.org		

By Their Side, Inc.

WEBSITE	TELEPHONE	EMAIL
bytheirsideside.org	443-279-1234	info@bytheirsideside.org

SinclairProsser Law

WEBSITE	TELEPHONE	EMAIL
sinclairprosserlaw.com	410-573-4818	

Maryland ABLE

WEBSITE	TELEPHONE	EMAIL
marylandable.org	1-855-563-2253	

Shared Horizons

WEBSITE	TELEPHONE	EMAIL
shared-horizons.org	202-448-1460	info@shared-horizons.org

Law Office of Cheryl Chapman Henderson, LLC

WEBSITE	TELEPHONE	EMAIL
hendersonlaw4god.com	301-220-4463	

CITIZENSHIP & ADVOCACY

People on the Go Maryland

WEBSITE	TELEPHONE	EMAIL
peopleonthegomaryland.com	443-923-9593	ken@pogmd.org

ESTATE PLANNING AND ELDER LAW ATTORNEYS SINCLAIRPROSSER LAW



From left to right: Attorneys Victor A. Lembo, Colleen Sinclair Prosser, Jon J. Gasior, Laura T. Curry and Alexander M. Pagnotta

- Health Care Directives
- Special Needs Planning
- Medicaid Planning
- Probate
- Guardianship
- Wills and Trusts
- Retirement
- Estate Administration
- Disability Planning
- Asset Protection
- Prenuptial Agreements
- FREE Educational Seminars

SEMINAR ATTENDANCE ENTITLES YOU TO A FREE ONE-HOUR CONSULTATION.

Offices in Annapolis, Bowie, Millersville and Waldorf
(410)573-4818 or (301)970-8080

Learn more about your estate planning options and our services by visiting our website:



www.sinclairprosserlaw.com



The Arc Maryland

WEBSITE	TELEPHONE	EMAIL
thearcmd.org	410-571-9320	

Independence Now

WEBSITE	TELEPHONE	EMAIL
innow.org	301-277-2839	info@innow.org

Parents Place of MD

WEBSITE	TELEPHONE	EMAIL
ppmd.org	1-800-394-5694	

Disability Rights MD

WEBSITE	TELEPHONE	EMAIL
disabilityrightsmd.org	410-727-6352	feedback@disabilityrightsmd.org

MD Developmental Disabilities Council

WEBSITE	TELEPHONE	EMAIL
md-council.org	410-767-3670	info@md-council.org

Legal Aid Bureau

WEBSITE	TELEPHONE	EMAIL
mdlab.org	301-927-6800	

HEALTHY LIVING**Prince George's Parks and Recreation Special Programs Division**

WEBSITE	TELEPHONE	EMAIL
mncppc.org	301-446-3400	ijeoma.eke@pgparks.com

PGC Special Olympics

WEBSITE	TELEPHONE	EMAIL
somd.org		

SPIRIT Club

WEBSITE	TELEPHONE	EMAIL
spirit-club.com	303-883-4364	jciner@spirit-club.com

Prince George's Community Resources (PGCR)

WEBSITE	TELEPHONE	EMAIL
PGCR.org	301-442-3708	pgcremail@gmail.com

Hispanic Community Resources

WEBSITE	TELEPHONE	EMAIL
cdrh.org		coderehisp@gmail.com

Children Developmental Clinic

WEBSITE	TELEPHONE	EMAIL
pgcc.edu	301-546-0519	gagnonsl@pgcc.edu

The Healing Farm and Miss Nicole's Horseback Riding

WEBSITE	TELEPHONE	EMAIL
sites.google.com/site/missnicolesandthehealingfarm/	240-417-0981	farmerkurtz@aol.com

Children & Youth w/ Special Health Care Needs Resource Locator

WEBSITE	TELEPHONE	EMAIL
Specialneeds.dhmfh.maryland.gov		

MD Medicaid

WEBSITE	TELEPHONE	EMAIL
mmcp.health.maryland.gov	1-855-642-8572	

Children's National Health System

WEBSITE	TELEPHONE	EMAIL
childrensnational.org	202-476-5000	



Shared Horizons

Enhancing Lives, Protecting Futures

We Congratulate
The Arc of Prince George's County on
Your Inaugural
TAKE CONTROL SUMMIT
Helping Caregivers Navigate through
Future and Financial Planning

We wish you much success with this extremely
important educational and networking summit,
benefiting families and caregivers!

Shared Horizons, Inc. is a nonprofit organization
dedicated to improving the quality of life for people with disabilities
through special needs trust administration and by providing grants
through our Charitable Fund.

For more information on our special needs trust options
for people with disabilities in the capital region call
202-448-1460

or visit our website
www.shared-horizons.org

EMPLOYMENT

Division Of Rehabilitation Services (DORS)

WEBSITE	TELEPHONE	EMAIL
dors.state.md.us/dors	Lanham 301-306-3600 Oxon Hill 301-749-4660	Lanham.dors@maryland.gov Suitland.dors@maryland.gov

Career One-Stop Center

WEBSITE	TELEPHONE	EMAIL
careeronestop.org dllr.state.md.us	301-618-8400	dlwdallargo-dllr@maryland.gov

The Arc Employment Services

WEBSITE	TELEPHONE	EMAIL
thearcofpgc.org	301-925-2730ext.223	dgoins@thearcofpgc.org

The Arc Ready@21

WEBSITE	TELEPHONE	EMAIL
thearcofpgc.org	301-925-7050ext.307	mclark@thearcofpgc.org

Ticket to Work

WEBSITE	TELEPHONE	EMAIL
yourtickettowork.ssa.gov	1-866-968-7842	support@choosework.ssa.gov

Project HIRE

WEBSITE	TELEPHONE	EMAIL
princegeorgescountymd.org	301-265-8450	VFBerkeley@co.pg.md.us

ASSISTANCE

Developmental Disabilities Administration

WEBSITE	TELEPHONE	EMAIL
dda.health.maryland.gov	301-362-5100	smro.dda@maryland.gov



PRE-EMPLOYMENT TRANSITION SERVICES PRESENTS:



READY

— [@] 21 —

14 WEEK COURSE

WHO IS IT FOR?

High school students, ages 14-21 with a documented disability. These programs will focus on transitioning from high school into employment. Counseling on opportunities for enrollment into post-secondary.



SERVICES WE OFFER

- Job exploration counseling
- Work-place readiness training
- Instruction in self-advocacy
- Counseling on opportunities for enrollment into post-secondary educational programs

Project HIRE Disability Apprenticeship Program



Program Overview

Project HIRE, an apprenticeship program, which provides individuals with developmental and/or intellectual disabilities between the ages of 18 and 25 a meaningful paid job training experience with a Prince George's County Government agency. Participants will be placed within a Host County agency for a period of one year and during this time they will have an opportunity to enhance current skills, learn new skills, and gain on the job work experience.

Eligibility

Program participants must be associated with a Supportive Employment Provider Agency

Prince George's County Resident with an intellectual or developmental disability

18-25 years of age

Available to work Monday through Friday for a maximum of 8 hours

Examples of Assignments



Data Entry



Account Clerk



Copy documents



Custodian



Organize and distribute supplies



Receptionist



Care for animals



File documents



Answer phones

How to Enroll

Contact your Supportive Employment Provider Agency and they will share the existing vacancies. Potential apprentices will select from a list of vacancies and with the assistance of their respective Supportive Employment Provider they will complete the Project HIRE application.



Social Security Administration

WEBSITE	TELEPHONE	EMAIL
ssa.gov	1-800-772-1213	

Low-Intensity Support Services

WEBSITE	TELEPHONE	EMAIL
marylandcommunityconnection.org	301-583-0358	info@marylandcommunityconnections.com

MD Energy Assistance Program

WEBSITE	TELEPHONE	EMAIL
dhs.maryland.gov	1-800-332-6347	

The Arc Prince George's County Benefits Enrollment Center

WEBSITE	TELEPHONE	EMAIL
thearcofpgc.org	301-925-7050 ext.267	membership@thearcofpgc.org

V-LINC

WEBSITE	TELEPHONE	EMAIL
v-linc.org	410-554-9134	

USEFUL RESOURCES

Prince George's County Infants & Toddler Program

WEBSITE	TELEPHONE	EMAIL
www1.pgcps.org	301-925-1985	

Prince George's County Memorial Library System

WEBSITE	TELEPHONE	EMAIL
pgcmls.info	301-699-3500	

Prince George's County Public Schools Family Support Center

WEBSITE	TELEPHONE	EMAIL
www1.pgcps.org	301-431-5675	

Prince George's County Financial Empowerment Center

WEBSITE	TELEPHONE	EMAIL
pgcc.edu/go/fec	301-546-5296	fec@pgcc.edu

Prince George's County Child Resource Center

WEBSITE	TELEPHONE	EMAIL
childresource.org	1-877-261-0060	

PGC Family Services Disability Information Referral

WEBSITE	TELEPHONE	EMAIL
princegeorgescountymd.gov	301-265-8450	

PGC State Information Health Insurance Assistance program

WEBSITE	TELEPHONE	EMAIL
princegeorgescountymd.gov	301-265-8450	

MD Relay

WEBSITE	TELEPHONE	EMAIL
doitmaryland.gov	1-800-552-7724	

MD Technology Assistance Program

WEBSITE	TELEPHONE	EMAIL
mdtap.org	1-800-832-4827	

MD Department of Disabilities

WEBSITE	TELEPHONE	EMAIL
mdod.maryland.gov	410-767-3660	

Prince George's Crisis Center (CCSI)

WEBSITE	TELEPHONE	EMAIL
communitycrisis.org	301-864-7161 1800-273-TALK (8255)	

Best Buddies Maryland

WEBSITE	TELEPHONE	EMAIL
bestbuddies.org	410-327-9812	



Are You Ready !!!

TRANSITIONING YOUTH

➔ **Membership:**
Provides information, referrals, and member-only education sessions on disability benefits, services, advocacy issues that focus on essential life span support.

➔ **Benefits Enrollment Center (BEC)**
Provides services to educate, screen and assist persons who are 18 and above for core federal benefits and community resources.

➔ **Transition 101:**
Provides parent education training on transition components from school to adult life.

➔ **Ready@21**
Provides Pre-Employment Training that support transitioning youth ages 14-21 from school to employment.

➔ **Arc Shop:**
Provides Arc member training on future and life planning topics for persons with disabilities.

CONTACT

Melonee Clark
301-925-7050 ext. 307
email:mclark@thearcofpgc.org

Toni Feagan
301-925-7050 ext. 267
email:afeagan@thearcofpgc.org

WE EQUIP HOMEBUYERS
WITH STEP BY STEP
KNOWLEDGE AND DIRECTION
IN AFFORDABLE HOUSING
PROGRAMS AND EQUITY
BUILDUP.

WE EQUIP SELLERS WITH
SELLING THEIR PRIMARY
RESIDENCE OR INVESTMENT
PROPERTIES.

WE SPECIALIZE IN HELPING
DISABLED HOMEBUYERS IN
MARYLAND THROUGH THE
HOMEABILITY PROGRAM.

CALL FOR
A **FREE CONSULTATION!**



CONTACT US

1300 Mercantile Ln., Upper Marlboro, MD 20774
Direct: 301-278-8821
Office: 301-808-8890
thelgroup@gmail.com

THE LLP GROUP

Where Dreams Come True

DO YOU HAVE A DISABILITY OR SPECIAL HEALTH CARE NEED? Do you care for or love someone who does?

- FREE Wheelchair Inspection & Repair
- Durable Medical Equipment
- Personal Care Products
- Services & Agencies
- Entertainment
- So Much More!



www.caringcommunities.org

A 501(c)3 Charitable Organization

May 2, 2020 • 11am - 4pm

Prince George's Sports & Learning Complex • Landover, MD

\$3.00 Per Person at the door • Free Pass Online • www.worldofpossibilities.org



The Department of Parks and Recreation provides a full continuum of comprehensive recreation and leisure services for all ages and abilities. We welcome, encourage and support the participation of individuals with and without disabilities in programs and services of their CHOICE.



SAVE THE DATE! Join us for the 3rd annual **SPROUT FILM FESTIVAL**, making the invisible visible! **Wednesday, October 16, 2019** at the M-NCPPC Public Playhouse. Tickets are **FREE!** Reserve your general admission seat in advance beginning August 19, 2019 through the Public Playhouse.

Don't miss this opportunity for two amazing screenings!

11:00 am-12:00 noon (doors open at 10:30 am)

7:00-8:00 pm (doors open at 6:30 pm)

Supported by the Maryland State Arts Council.



For more information about M-NCPPC Disability Services contact our team at

The Special Programs Division at 301-446-3400.

www.MNCPPC.org



ARCHDIOCESE OF WASHINGTON
DEPARTMENT OF SPECIAL NEEDS MINISTRIES

The Department of Special Needs Ministries invites all persons with Special Needs and their families to experience, throughout their lifespan, their essential belonging to the Body of Christ. We work with clergy and families as well as other partners to encourage people with special needs to participate fully in their parishes and communities.

Who we serve:

- Persons who are Deaf and Deaf Blind
- Gallaudet University Chaplaincy; St. Francis Deaf Catholic Church and local ASL- interpreted parishes
- Persons who are Low Vision or Blind
- Persons with Disabilities—physical, developmental, intellectual or sensory disabilities
- Families receiving an unexpected prenatal diagnosis of disability or lethal condition
- Persons with mental illness
- Veterans with Service-related disability

Contact us at:

301-853-4560

240-200-5430 (VP)

<https://adw.org/living-the-faith/special-needs/>

<https://www.facebook.com/specialneedsministry/>

@ADWSNM

AUTISM WAIVER

Maryland's Home and Community Based Services Waiver for Children with Autism Spectrum Disorder allows eligible children with Autism Spectrum Disorder to receive specific waiver services and certain Medicaid services to support them in their homes and communities.

Autism Waiver Services

- Respite Care
- Environmental Accessibility Adaptations
- Family Consultation
- Residential Habilitation
- Intensive Individual Support Services
- Therapeutic Integration
- Adult Life Planning

Waiver participants are also eligible to receive Medicaid services which include:

- Physician and Hospital Care
- Pharmacy
- Home Health
- Laboratory Services
- Disposable Medical Supplies and Durable Medical Equipment
- Mental Health Services
- Payment of Medicare premiums, co-payments, and deductibles

WHO SHOULD APPLY?

Maryland children with autism, ages 2 through 21, who need an Intermediate Care Facility for the Intellectually Disabled (ICF-ID) level of care.

ELIGIBILITY GUIDELINES

Medical and Technical Criteria

- Individuals must be certified as needing services from an ICF-ID.
- Must have an Individual Family Service Plan (IFSP) or Individualized Education Program (IEP) with 15 hours of special education and related services
- Must be able to be served in the home and community with Autism Waiver services
- Must meet additional Autism Waiver medical and technical eligibility criteria

Financial Criteria

- An individual's income and assets are reviewed to determine financial eligibility for Medical Assistance.
- The child's monthly income may not exceed 300% of SSI benefits, and the countable assets may not exceed \$2,000 or \$2500 (depending on eligibility category)

PERSONS INTERESTED SHOULD:

Apply for future services by contacting the Waiver Services Registry at **1-866-417-3480**. The Waiver Services Registry is a list of individuals interested in waiver services.

For more information regarding the Autism Waiver, contact the Maryland State Department of Education at **410-767-1446**.



Dr. Lillian M. Lowery
Superintendent of Schools
www.MarylandPublicSchools.org



Van T. Mitchell
Secretary
www.dhmfh.maryland.gov

Community First Choice

Maryland's Community First Choice option provides community services and supports to enable older adults and people with disabilities to live in their own homes.

AVAILABLE COMMUNITY FIRST CHOICE SERVICES

- Personal Assistance Services
- Supports Planning
- Nurse Monitoring
- Personal Emergency Response Systems
- Technology
- Assistive Technology
- Environmental Assessments
- Accessibility Adaptations
- Consumer Training
- Transition Services
- Home Delivered Meals

CFC Participants are also eligible to receive other Medicaid services which may include:

- Physician and Hospital Care
- Pharmacy
- Home Health
- Laboratory Services
- Mental Health Services
- Disposable Medical Supplies
- Durable Medical Equipment

WHO SHOULD APPLY

Maryland residents who need support with activities of daily living, such as bathing, grooming, dressing, and getting around.

ELIGIBILITY GUIDELINES

Medical and Technical Criteria

- Individuals must reside in the community.
- Individuals must meet the level of care required to qualify for services in an institution.

Financial Criteria

- Individuals must qualify for Medicaid in the community
- Individuals can apply for Medicaid at anytime
- Individuals who receive Supplemental Security Income (SSI) are automatically eligible for Medicaid and do not need to apply
- Medicaid coverage information can be found at <https://mmcp.health.maryland.gov>

PERSONS INTERESTED SHOULD:

Contact Maryland Access Point at:
1-844-627-5465



MARYLAND
Department of Health

Larry Hogan, Governor – Boyd Rutherford, Lt. Governor
Maryland Department of Health
Office of Health Services
Community Integration Programs
201 W. Preston Street, Room 136
Baltimore, MD 21201
410-767-1739

HOME AND COMMUNITY-BASED OPTIONS WAIVER

Maryland's Home and Community-Based Options Waiver provides community services and supports to enable older adults and people with physical disabilities to live in their own homes.

AVAILABLE WAIVER SERVICES

- Assisted Living
- Medical Day Care
- Family Training
- Case Management
- Senior Center Plus
- Dietitian and Nutritionist Services
- Behavioral Consultation

Waiver participants are also eligible to receive Medicaid services which may include:

Community First Choice Services

- Personal Assistance Services
- Supports Planning
- Nurse Monitoring
- Personal Emergency Response Systems
- Assistive Technology
- Environmental Assessments
- Accessibility Adaptations
- Consumer Training
- Transition Services
- Home Delivered Meals

Other Services

- Physician and Hospital Care
- Pharmacy
- Home Health
- Laboratory Services
- Mental Health Services
- Disposable Medical Supplies and Durable Medical Equipment

WHO SHOULD APPLY

Maryland residents who need support with activities of daily living, such as bathing, grooming, dressing, and getting around.

ELIGIBILITY GUIDELINES

Medical and Technical Criteria

- Individuals must be age 18 or older
- Individuals must meet the level of care required to qualify for nursing facility services.

Financial Criteria

- An individual's income and assets are reviewed to determine financial eligibility for Medical Assistance.
- The monthly income of an individual may not exceed 300% of SSI benefits, and the countable assets may not exceed \$2,000 or \$2,500 (depending on eligibility category).
- Only the income and assets of the individual (and assets of any spouse) are considered in determining financial eligibility.

PERSONS INTERESTED SHOULD:

If you live in a nursing facility:

Contact Maryland Access Point at:
1-844-627-5465

If you live in the community:

The waiver cannot accept new community applicants at this time. A Service Registry was developed for interested community individuals. For more information, please call Maryland Access Point at:

1-844-627-5465



MARYLAND
Department of Health

Larry Hogan, Governor – Boyd Rutherford, Lt. Governor
Maryland Department of Health
Office of Health Services
Community Integration Programs
201 W. Preston Street, Room 136
Baltimore, MD 21201
410-767-1739

INCREASED COMMUNITY SERVICES

Maryland's Increased Community Services program allows eligible individuals in nursing facilities to return to the community and receive services and supports in their own homes.

Coverage and Benefits

- Personal Assistance Services
- Supports Planning
- Nurse Monitoring
- Personal Emergency Response Systems
- Assistive Technology
- Environmental Assessments
- Accessibility Adaptations
- Consumer Training
- Transition Services
- Home Delivered Meals
- Assisted Living
- Medical Day Care
- Family Training
- Dietician Nutrition Services
- Behavioral Consultation
- Senior Center Plus

Program participants are also eligible to receive Medicaid services which include:

- Physician and Hospital Care
- Pharmacy
- Home Health
- Laboratory Services
- Disposable Medical Supplies and Durable Medical Equipment
- Payment of Medicare premiums, co-payments, and deductibles

WHO SHOULD APPLY

Maryland residents who reside in nursing facilities and would like to receive services in their homes and communities; however, their income is too high for participation in Medicaid Home and Community-Based Options waiver program.

ELIGIBILITY GUIDELINES

Technical Criteria

- Individuals must be age 18 or older
- Individuals must be currently residing in a nursing facility for at least three (3) months, 30 days of which are eligible to be covered by Medicaid.
- An individual's services in the community may not cost the Medicaid Program more than the individual's services in the nursing facility.
- An individual must not be eligible for an existing Medicaid 1915(c) waiver.

Medical Criteria

- Individuals must meet the level of care required to qualify for nursing facility services.

Financial Criteria

- An individual participating in the Increased Community Services program shall contribute income in excess of 300% of SSI to the cost of care in the community and must meet the Program's asset limits (\$2,000 or \$2,500 depending on eligibility category).

PERSONS INTERESTED SHOULD:

Maryland Access Point at: 1-844-627-5465



MARYLAND
Department of Health

Larry Hogan, Governor – Boyd Rutherford, Lt. Governor
Maryland Department of Health
Office of Health Services
Community Integration Programs
201 W. Preston Street, Room 136
Baltimore, MD 21201
410-767-1739

Waiver for Individuals with Brain Injury

Maryland's Home and Community-Based Services Waiver for Individuals with Brain injury provides residential habilitation, day habilitation, and supported employment services to adults with brain injuries.

BRAIN INJURY SERVICES:

- Residential habilitation
- Day habilitation
- Supported employment
- Individual Support Services
- Case management
- Medical Day Care

Waiver participants are also eligible to receive all Medicaid state plan services which may include:

Services:

- Physician and Hospital Care
- Pharmacy
- Home Health
- Laboratory Services
- Mental Health Services
- Disposable Medical Supplies and Durable Medical Equipment
- Payment of Medicare premiums, co-payments, and deductibles

WHO SHOULD APPLY

Maryland residents aged 22 through 64 who have been diagnosed with brain injury and meet the following criteria.

ELIGIBILITY GUIDELINES

Medical Criteria:

- Individuals with brain injury who require a specialty hospital or nursing facility level of care.

Technical Criteria:

- *Individuals must have experienced the brain injury after the age of 17*
- *Individuals must be inpatients in a State Mental Hygiene Administration facility, inpatients in a state owned and operated nursing facility, a Maryland licensed Special hospital for Chronic Disease that is CARF accredited for Brain Injury Inpatient Rehabilitation, or individuals who have been placed by Medicaid in an out-of state facility.*

Financial Criteria

- An individual's income and assets are reviewed to determine financial eligibility for Medical Assistance.
- The monthly income of an individual may not exceed \$2,163, and the countable assets may not exceed \$2,000.
- Only the income and assets of the individual (and assets of any spouse) are considered in determining financial eligibility.

PERSONS INTERESTED SHOULD:

Contact MHA's Office of Adult Service at: 410-402-8476, 1-877-4MD-DHMH or for MD Relay Service 1-800-735-2258 for more information.



STATE OF MARYLAND

DHMH

Lawrence J. Hogan, Jr, Governor Boyd K. Rutherford, Lt. Governor

Van T. Mitchell, Secretary

Maryland Department of Health Mental Hygiene

Behavioral Health Administration

Office of Adult Services

55 Wade Avenue, Dix Bldg

Catonsville, MD 21228

410-402-8476

